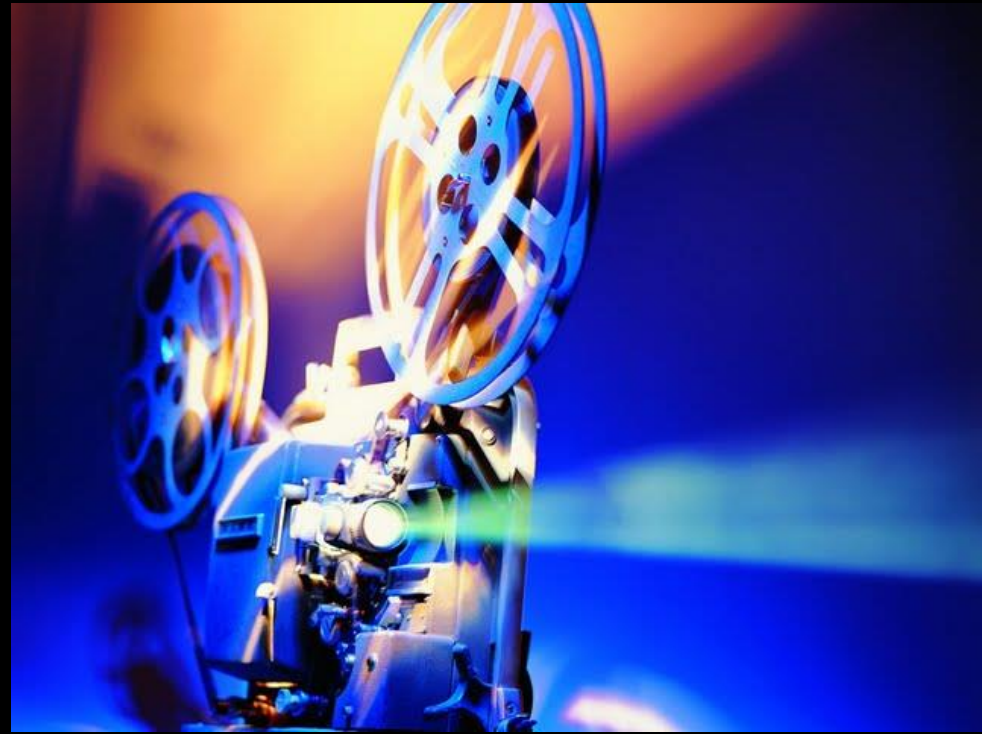


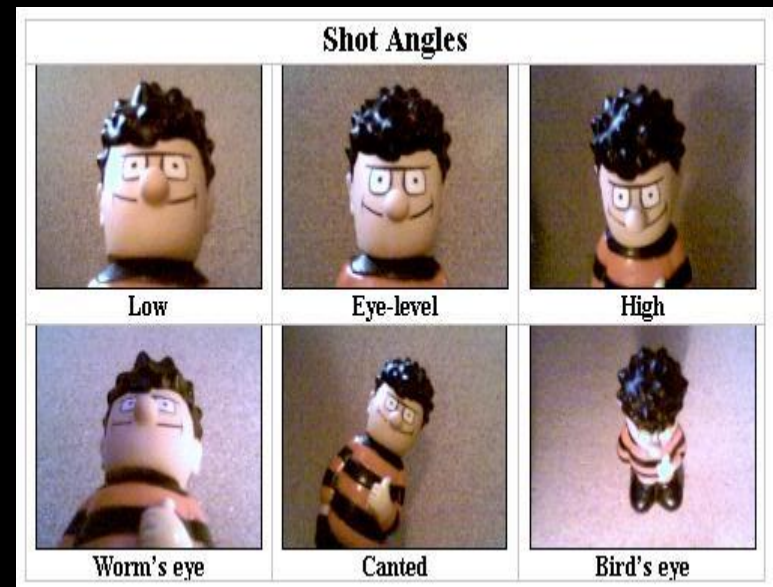
# CAMERA ANGLES

Middle School Film Studies  
Unit 3



# Camera Angles

- Just as they can select the distance of the camera, filmmakers can also select the **angle** of the shot.
- Possible angles are
  - **eye-level**
  - **low-angle**
  - **high-angle**
  - **bird's eye**
  - **worm's eye**, and
  - **Dutch tilt** (or canted angle).
- What purpose do you think these different angles serve?



# Eye-Level Shot

- The camera is placed at the level of the actor's eyes.
- Why might an *eye-level shot* be used?
- It's considered "neutral."



*Forrest Gump*, 1994



*Titanic*, 1997

# Low-Angle Shot

- The director shoots his or her subject from below.
- Why might a *low-angle shot* be used?
- The camera is “looking up” at the subject.
- Can make the subject seem important, powerful, or threatening.



*Touch of Evil*, 1958



*Inglorious Basterds*, 2009

# High-Angle Shot

- The director shoots his or her subject from above.
- Why might a *high-angle shot* be used?
- The camera is “looking down” at the subject.
- Can make the subject seem weak or vulnerable.



*O Brother, Where Art Thou?*, 2000



*Matilda*, 1996

# Bird's-Eye Shot

- The director shoots his or her subject from directly above: the highest possible angle.
- Why might a *bird's-eye shot* be used?
- Is a “god-like” view.
- Can imply a dream-like or “out-of-body” state.
- Presents the context of what is beneath the subject.



*Titanic*, 1997



*Kill Bill*, 2003

# Dutch Tilt

- Named due to its use in early German films (“Deutch” means German).
- Why might a *Dutch Tilt* be used?
- Can show a character’s unbalanced mental state.
- Can suggest corruption, or a world out of kilter.



*The Third Man, 1949*



*Inception, 2010*

# Camera Angles – Points to Consider

1. Camera angles can often distort what is onscreen, making a figure appear larger or smaller, for example.
2. Camera angles have a psychological effect on the audience's perceptions
3. Angles may sometimes fulfill the opposite of the functions defined here.

Activity: Have students take pictures of one another from various angles and share these to a common folder. Display, and discuss the impact each choice has.

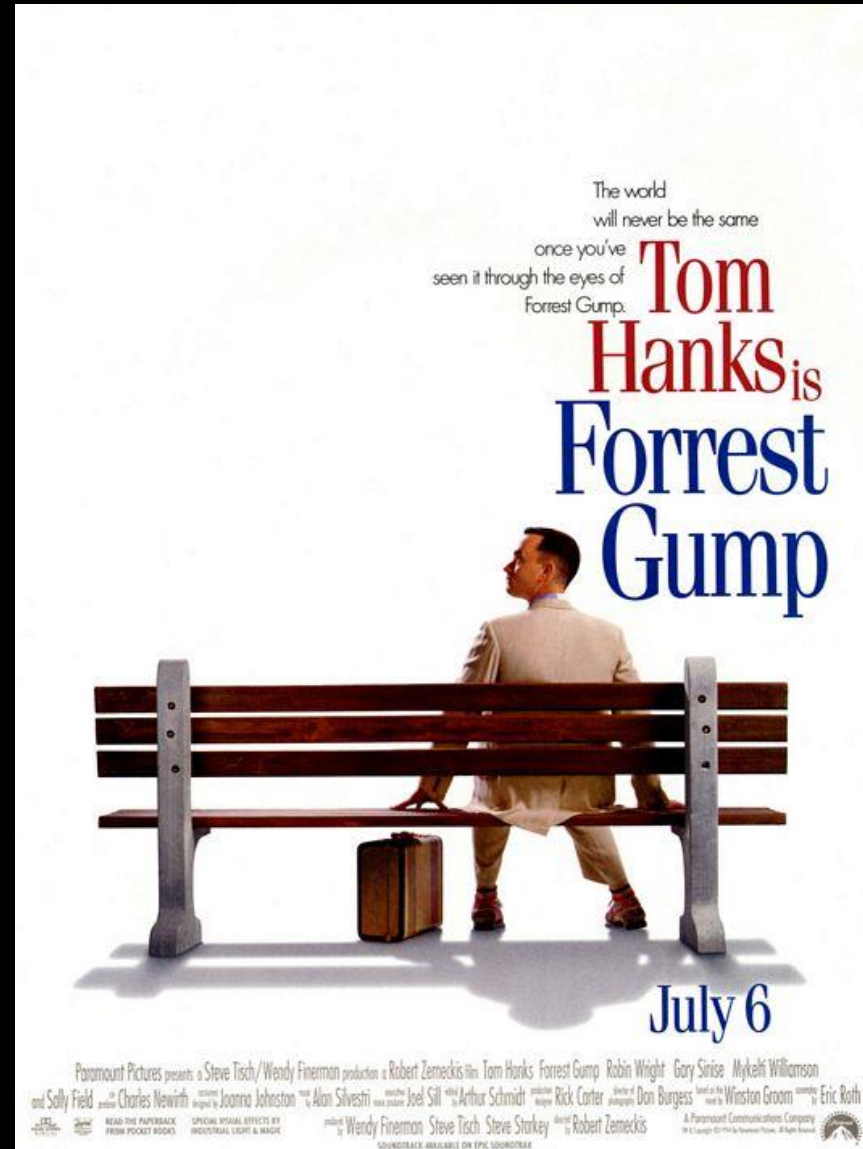


*The Shining*, 1980



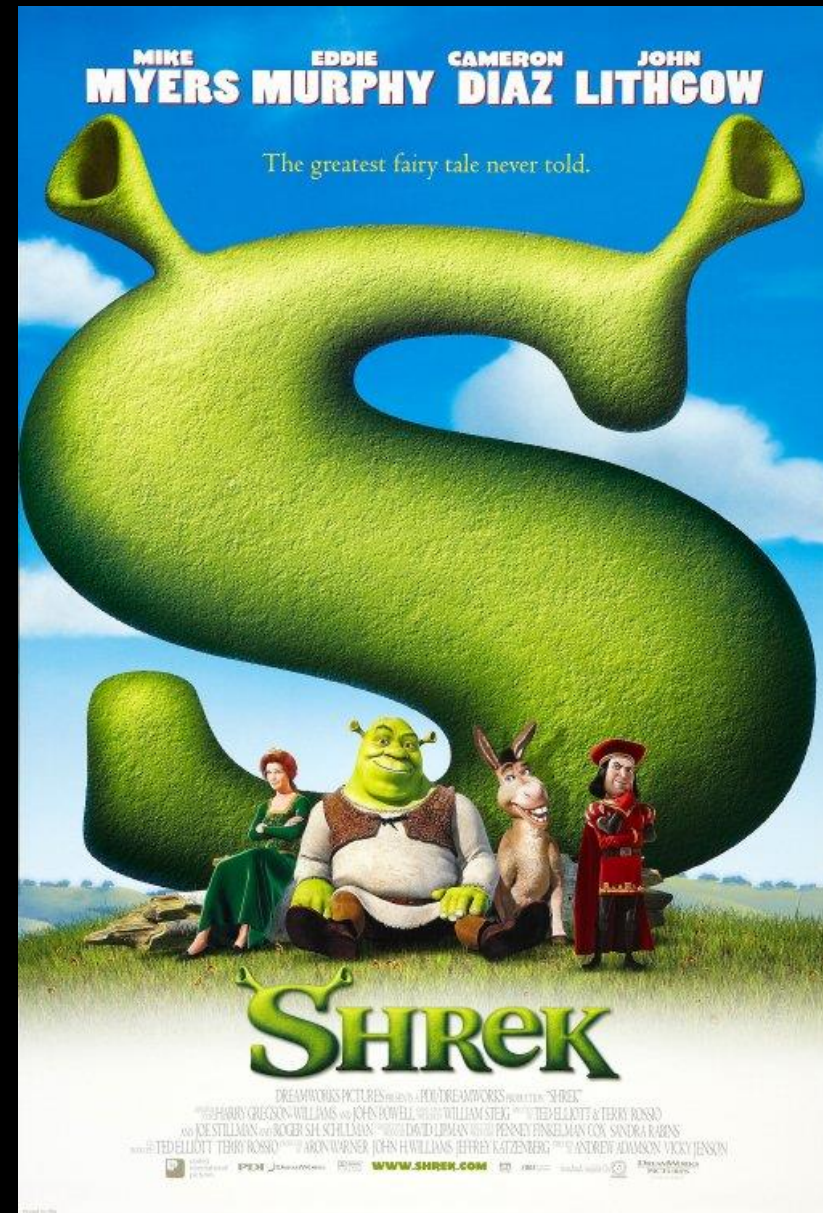
# Camera Angles: Examples

- In the following film clip, identify which angles the director makes use of and why.
- *Forrest Gump* (1994)



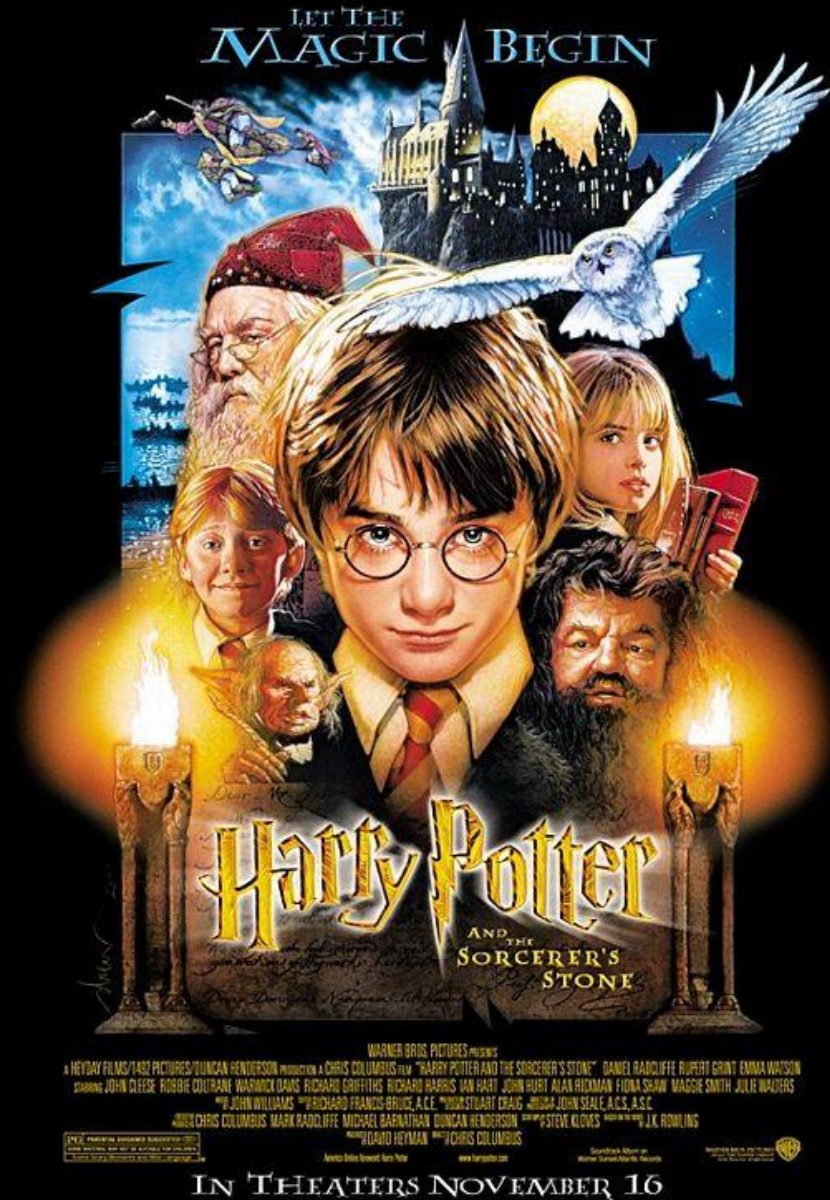
# Camera Angles: Examples

- In the following film clip, identify which angles the director makes use of and why.
- *Shrek (2001)*



# Camera Angles: Examples

- In the following film clip, identify which angles the director makes use of and why.
- *Harry Potter and the Sorcerer's Stone (2001)*



# Camera Angles: Examples

- In the following film clip, identify which angles the director makes use of and why.
- *Zootopia* (2016)



# Camera Angles Quiz

1. Why might an eye-level shot be used?
2. Why might a low angle be used?
3. Why might a high angle be used?
4. Why might a bird's-eye shot be used?
5. Why might a Dutch tilt be used?

password for web access is  
bald999